

iSC GmbH
Customer Service
Eschenstraße 6
94405 Landau/Isar

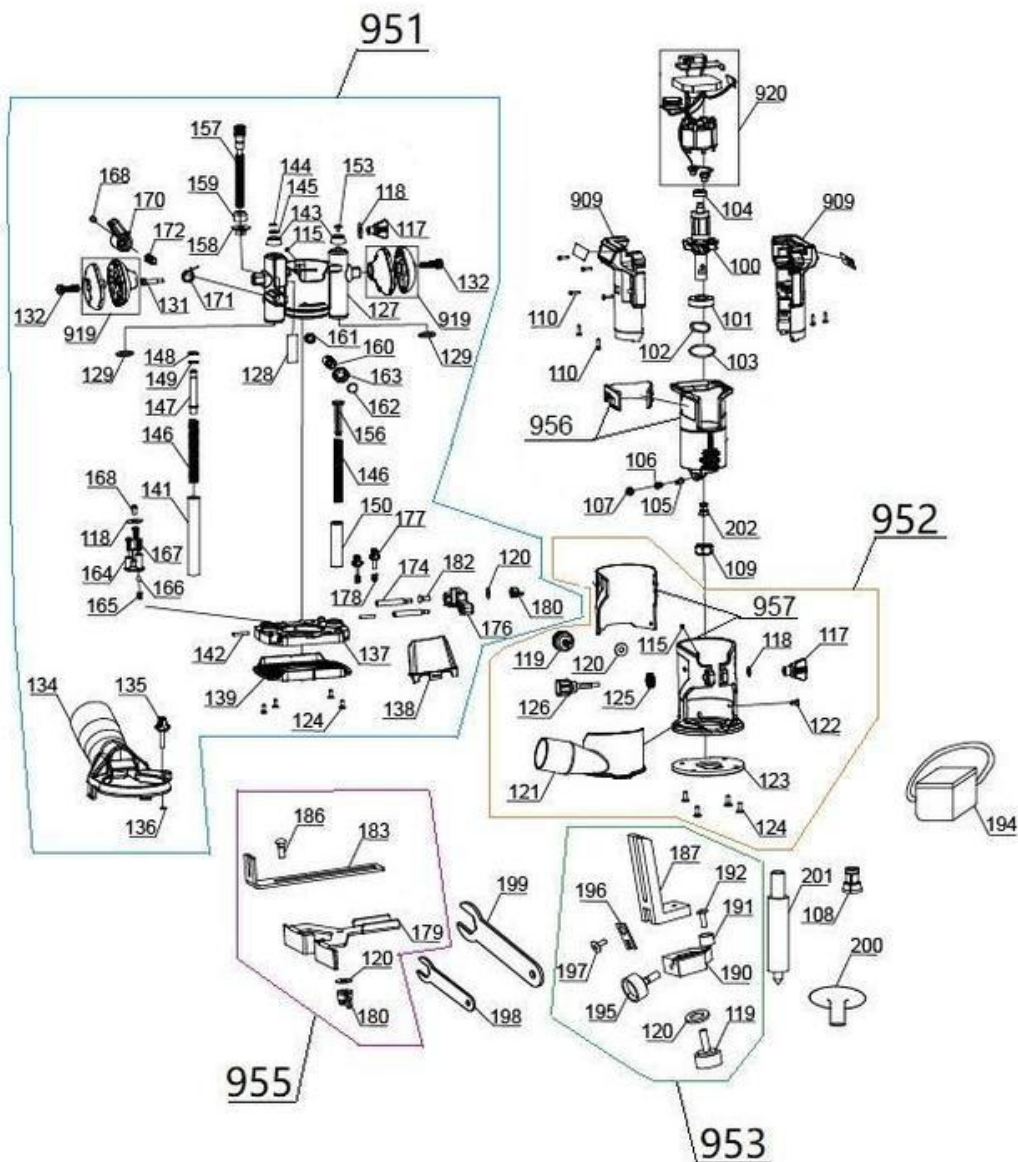
Telephone:
Email:

+49 9951 959 2019
service-de@einhell.com



Cordless Router / Palm Router
TP-RO 18 Set Li BL - Solo

Article number: 4350410
Ident number: 21023



Spare parts

Pos	Art.	Ident number	Product Name
099	435041002099	00000	color box
100	435041001100	00000	brushless rotor
101	435041001101	00000	fan bearing 6003-2RZ
102	435041001102	00000	wave washer
103	435041001103	00000	o-ring
104	435041001104	00000	ball bearing 607-2RZ
105	435041001105	00000	arrest bolt
106	435041001106	00000	return spring
107	435041001107	00000	push button
108	435041001108	00000	collet / clamp sleeve 8 mm
109	435041001109	00000	clamping nut
110	435041001110	00000	screw ST3.5 x 16
194	435041001194	00000	storage bag
198	435041001198	00000	spanner A
199	435041001199	00000	spanner B
200	435041001200	00000	guide sleeve
201	435041001201	00000	compass tip
202	435041001202	00000	collet / clamp sleeve 6 mm
909	435041001909	00000	Housing Assembly
920	435041001920	00010	Electric Control Assembly
951	435041002951	00010	Router Insert Assembly
952	435041001952	00010	Palm Router Insert Assembly
953	435041001953	00010	Edge Guide Assembly
955	435041001955	00010	Parallel Guide Assembly
956	435041001956	00010	motor housing down w.soft grip

Electric Control Assembly

Article number: 435041001920
Ident number: 00010

Spare parts

Pos	Art.	Ident number	Product Name
004	435041001004	00000	stator

Spare parts

Pos	Art.	Ident number	Product Name
115	435041001115	00000	guide bolt
117	435041001117	00000	wing nut
118	435041001118	00000	standard washer
120	435041001120	00000	standard washer
124	435041001124	00000	screw M4 x 8
127	435041001127	00000	mounting support
128	435041001128	00000	scale for depth adjustment
129	435041001129	00000	dustproof ring
131	435041001131	00000	screw M5 x 10
132	435041001132	00000	sems screw M8 x 25
134	435041001134	00000	extraction connector
135	435041001135	00000	winged screw
136	435041001136	00000	o-ring
137	435041001137	00000	sliding shoe
138	435041001138	00000	transparent protection cover
139	435041001139	00000	sliding plate
141	435041001141	00000	guide tube left
142	435041001142	00000	roll pin
143	435041001143	00000	cap
144	435041001144	00000	retainer
145	435041001145	00000	standard washer
146	435041001146	00000	return spring
147	435041001147	00000	guide rod
148	435041001148	00000	retainer
149	435041001149	00000	standard washer
150	435041002150	00000	guide tube right
153	435041001153	00000	screw M4 x 9
156	435041001156	00000	guide rod
157	435041001157	00000	adjustment rod
158	435041001158	00000	pointer
159	435041001159	00000	fine adjustment
160	435041001160	00000	interlock bolt
161	435041001161	00000	spring
162	435041001162	00000	plastic cap
163	435041001163	00000	knurled nut
164	435041001164	00000	rotating deepness adjustment
165	435041001165	00000	spring
166	435041001166	00000	ball d6.75
167	435041001167	00000	attachment screw M5 x 9
168	435041001168	00000	sems screw M5 x 16
170	435041001170	00000	lever
171	435041001171	00000	return spring
172	435041001172	00000	threaded bolt M10 x 22
174	435041001174	00000	guide rod
176	435041001176	00000	positioning block
177	435041001177	00000	winged screw M5 x 14
178	435041001178	00000	spring
180	435041001180	00000	wing nut M5
182	435041001182	00000	parallel guide fixing screw
919	435041001919	00000	Handle Assembly

Spare parts

Pos	Art.	Ident number	Product Name
114	435041001114	00000	fixing sleeve
115	435041001115	00000	guide bolt
116	435041001116	00000	soft grip
117	435041001117	00000	wing nut
118	435041001118	00000	standard washer
119	435041001119	00000	knurled screw M6 x 20
120	435041001120	00000	standard washer
121	435041001121	00000	extraction connector
122	435041001122	00000	screw
123	435041001123	00000	sliding plate
124	435041001124	00000	screw M4 x 8
125	435041001125	00000	cog wheel depth adjustment
126	435041001126	00000	adjusting screw
957	435041001957	00010	fixing sleeve with soft grip

Spare parts

Pos	Art.	Ident number	Product Name
119	435041001119	00000	knurled screw M6 x 20
120	435041001120	00000	standard washer
187	435041001187	00000	angle bracket
190	435041001190	00000	guiding block
191	435041001191	00000	guide roller
192	435041001192	00000	screw M5 x 8
195	435041001195	00000	adjustment screw M6 x 15
196	435041001196	00000	holding plate
197	435041001197	00000	screw

Spare parts

Pos	Art.	Ident number	Product Name
120	435041001120	00000	standard washer
179	435041001179	00000	hammer block
180	435041001180	00000	wing nut M5
183	435041001183	00000	angle bracket
186	435041001186	00000	carriage bolt M6 x 13

motor housing down w.soft grip

Article number: 435041001956
Ident number: 00010

Spare parts

Pos	Art.	Ident number	Product Name
111	435041001111	00000	motor housing down
112	435041001112	00000	soft grip

fixing sleeve with soft grip

Article number: 435041001957
Ident number: 00010

Spare parts

Pos	Art.	Ident number	Product Name
114	435041001114	00000	fixing sleeve
116	435041001116	00000	soft grip